

# Statistics South Africa

---

Reliable • Relevant • Responsive • Representative

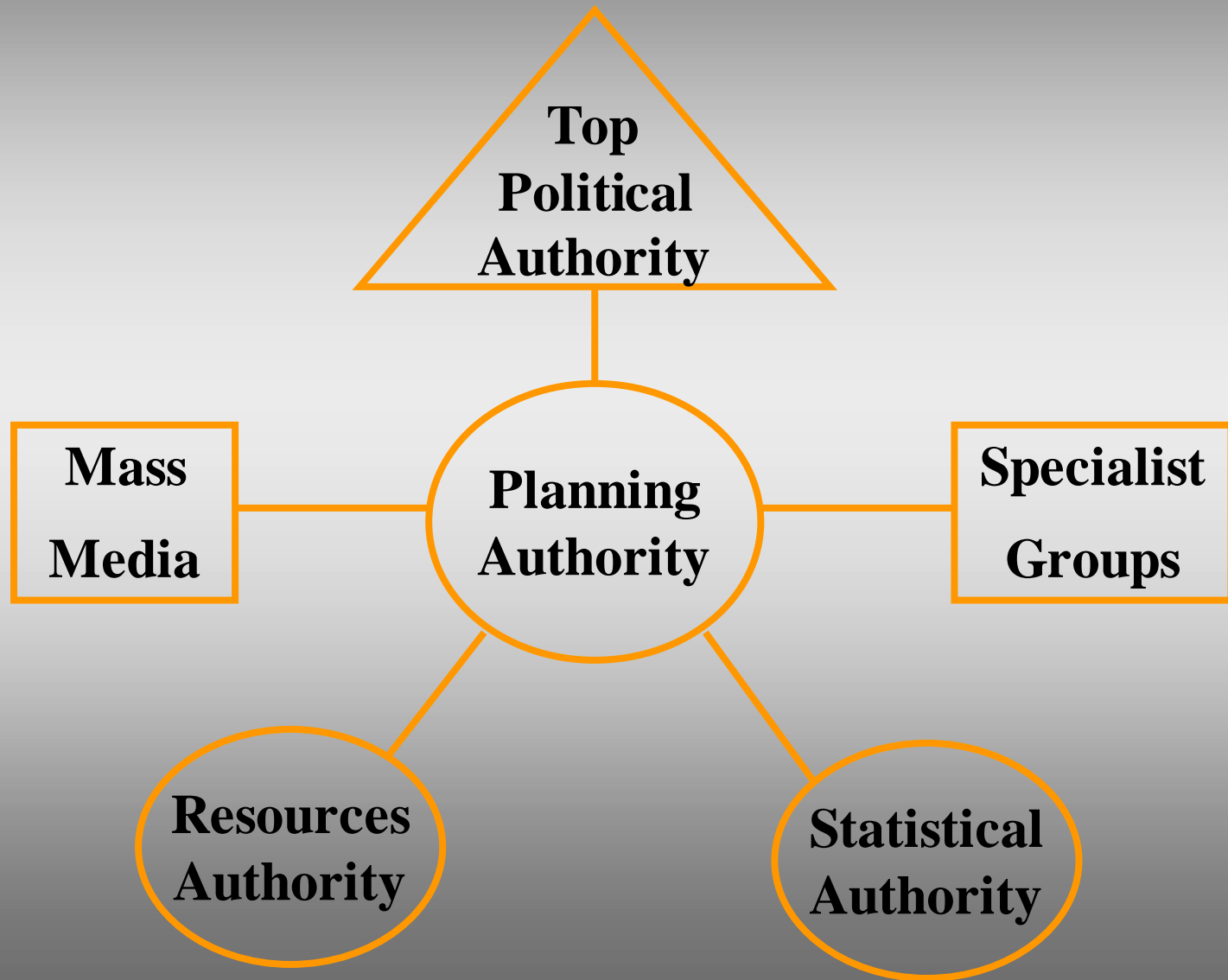
---

# Scope

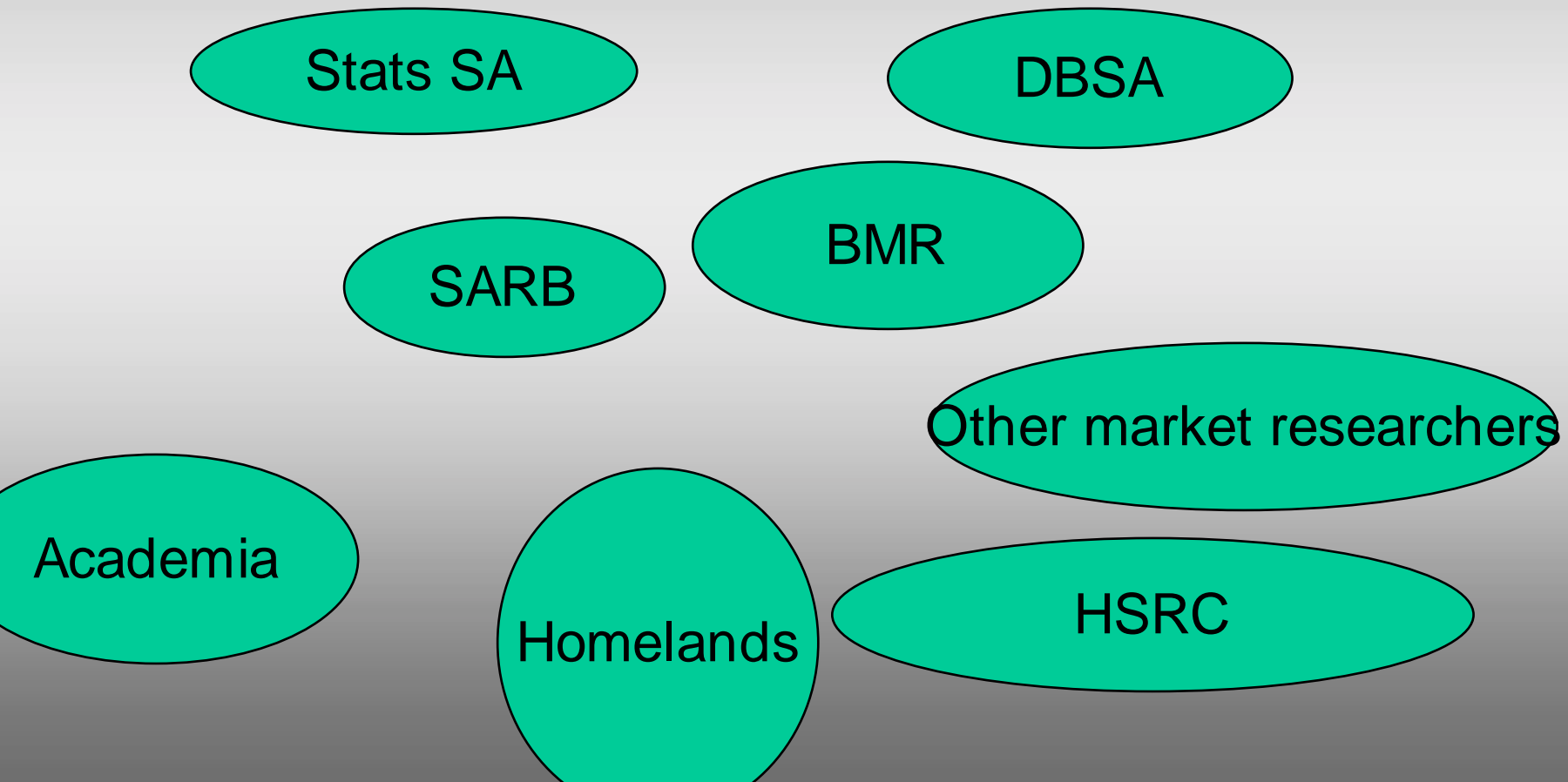
- Development Index Framework
  - Performance Monitoring and Evaluation
  - Data collection application to Monitoring and Evaluation
  - Management Information Systems

# Utilisation Framework for Official Statistics

Statistics is too important to be left to statisticians alone



# The fragmented system



# TRANSITION: Pre-Ten Review Period

Ends leadership Era

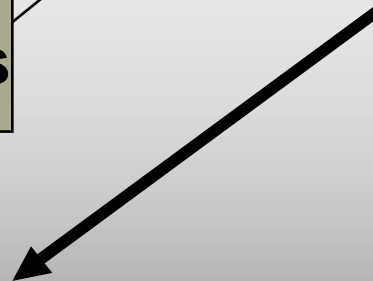
Change in Political system 2 yrs

Change in legal system 2 yrs

Change institutions 2 years

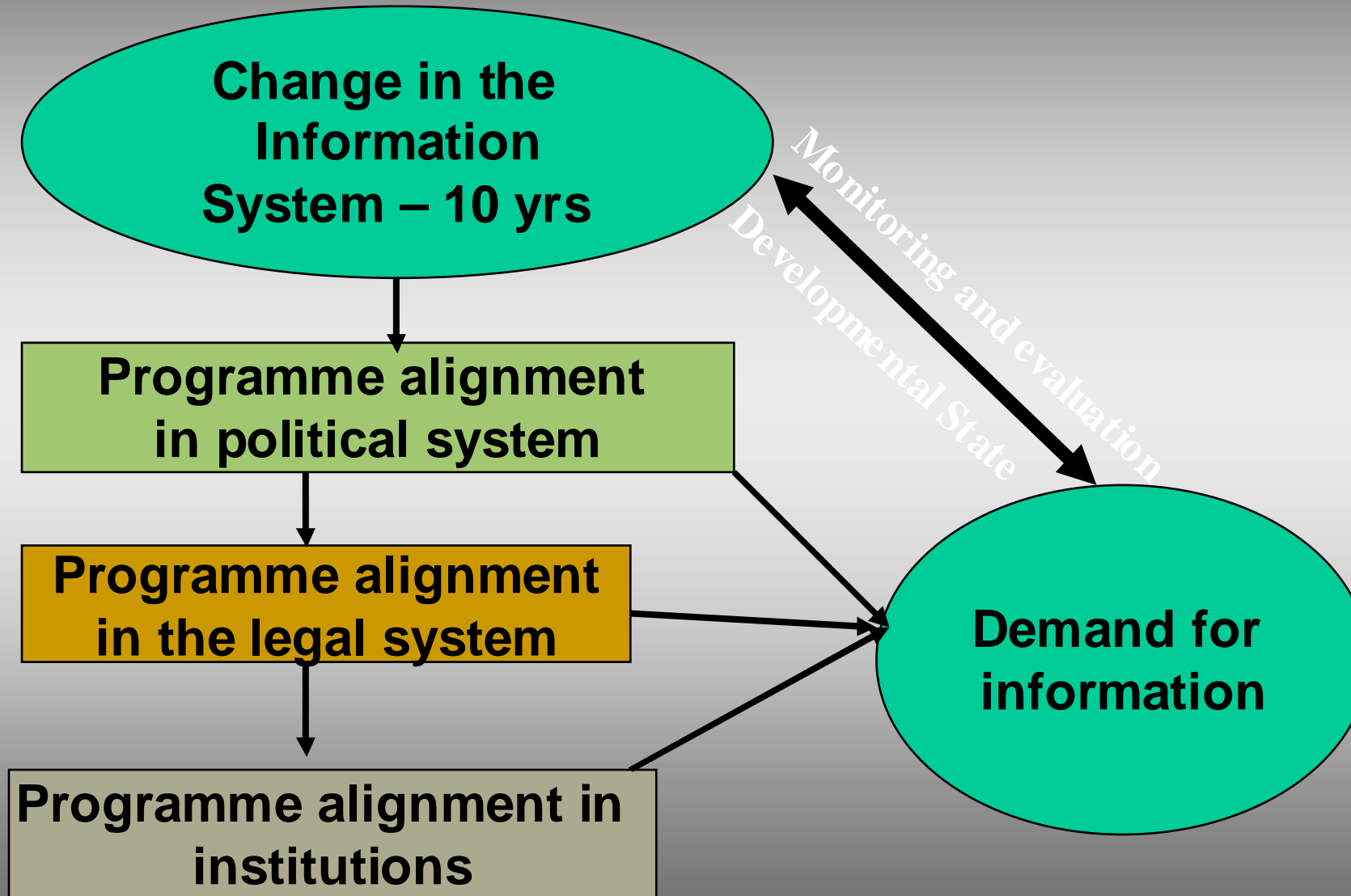
Demand for information

Change in Information Systems – 2-3 yrs



# POST-TEN-YEAR-REVIEW PERIOD

Means Leadership Era



# ELEMENTS OF THE SYSTEM



## Positive Contributions of Official Statistics

- Basic information on society
- Informational service as arise from legal rulings
- Raising information levels for the information society
- Provides orientation aids
- Supplement other info services
- Knowledge base for counter information
- Statistical advice for govnmnt

## Knowledge Deficits of Official Statistics

- Unavoidable knowledge gaps e.g. the future
- Intentional ignorance e.g. where there should be stats but none exist
- Limited partial knowledge
- Legalised knowledge errors e.g, definitions & standards poverty
- Inherent limits of statistical information: By its nature it can't deliver insights



# Handlers of information & Risk Profile

Blind (mailman not allowed to read)

Discreet (butler knows but no comment)

Anonymous (statistician notes mass data)

Mechanical (politicians)

Participatory (scientist excited by theory)

Interventionist (knowledge = power)

# Competency Profile & Risk management

**no** insight understanding intervention

insight understanding **no** intervention

Understanding **no** insight intervention

insight intervention **no** understanding

insight understanding **no** intervention

insight understanding & intervention

# System of Statistics in Stats SA

## National Accounts

- Quarterly GDP

- Annual GDP  
- GDP per region  
- Supply and use tables

- Tourism Satellite Accounts  
- Social Accounting Matrix  
- Natural Resource Accounts



Monthly series

Quarterly series

Annual series

3 Yearly series

5 /10 Yearly or Occasional series

**Economic Statistics**

- Consumer Price Statistics
- Rural consumer Price Index
- Production Price Statistics
- *Price Index for Services*
- *BCC (user paid) - (not N/A)*
- Mining Production & sales
- Manufacturing Product & sales
- Manufacturing Utilisation of production capacity
- Generation and consumption of electricity
- *Tourism accommodation survey*
- *Restaurant, fast food outlets, bars & taverns*
- *Trading statistics of Hotels*
- *Land and Freight Transport*
- *Wholesale Trade sales*
- *Retail Trade Sales*
- *Retail Trade in Motor vehicles and accessories*
- *Liquidations and Insolvencies*
- *Building Statistics*

**Economic Statistics**

- Financial Statistics on Municipalities
- Survey on Levies
- Financial Statistics (QFS) - private sector

**Employment Statistics**

- SEE
- AME
- QES
- LFS (6 monthly)

**Economic Statistics**

- Consolidated General Government Institutions
- National Govern' expenditure
- Provincial Govern' expenditure
- Extra-budgetary Accounts and Funds
- Universities and Technikon
- Financial Statistics on Municipalities
- Building Statistics
- Economic Activity Survey
- Actual and Expected Capital Expenditure of Government
- *Municipalities: Non-financial data (not N/A)*

**Social and Population**

- General Household Survey
- Causes of Death (**not N/A**)
- Recorded Live Births (**not N/A**)
- Mid-year population estimates (**not N/A**)
- *Marriages and divorces (not N/A)*

**Economic Statistics**

- *Business services (LSS)*
- *Mining (LSS)*
- *Manufacturing (LSS)*
- *Wholesale and Retail trade (LSS)*
- *Motor trade (LSS)*
- *Post and Telecommunication (LSS)*
- *Transport (LSS)*

**Social and Population**

- *Census replacement survey*

**Economic Statistics**

- Income and Expenditure (5 yr)
- Agriculture Census (periodic)

**Social and Population**

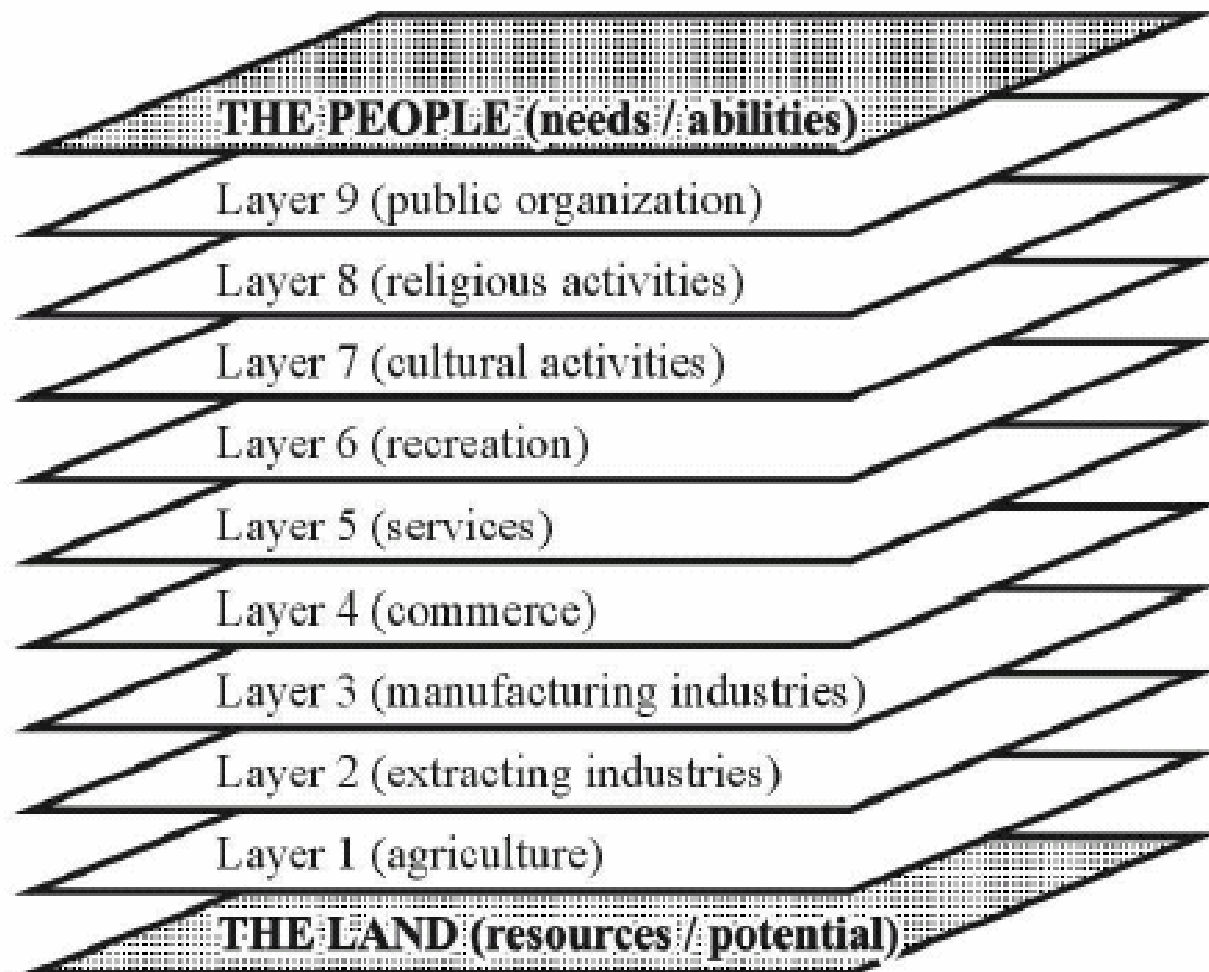
- Population Census (10 yr)

## Business Address Register

## Spatial frame/Physical Address Register

Blue = SDDS requirement; Green = SDDS but not National Accounts; Red = Not SDDS

# STRUCTURE

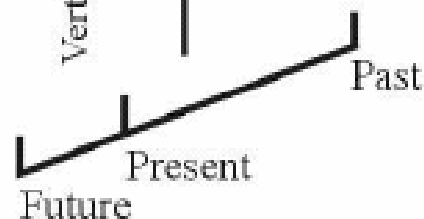


# DYNAMICS

Horizontal relationships within layers

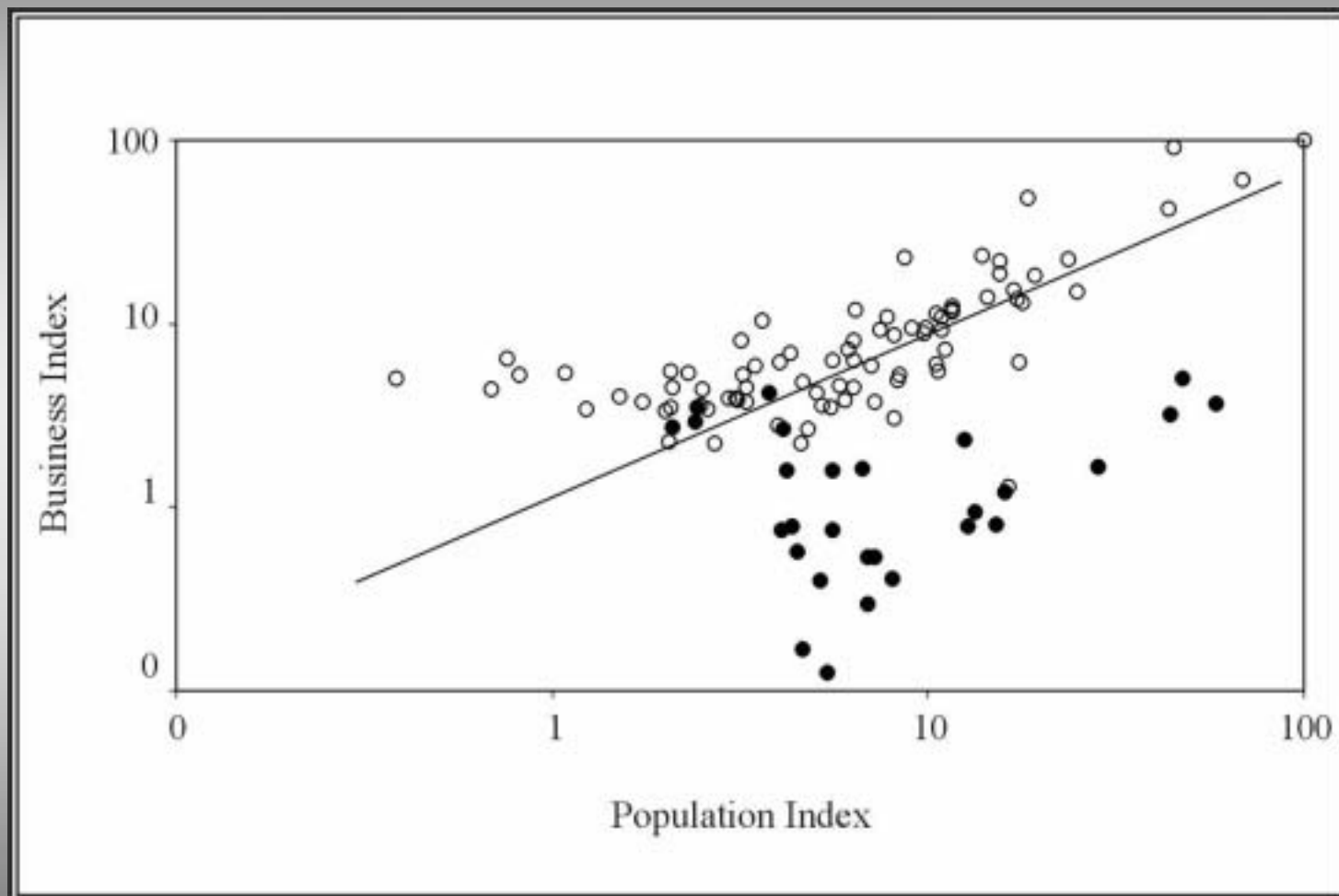


Vertical relationships between layers



Balance between the natural and built environment

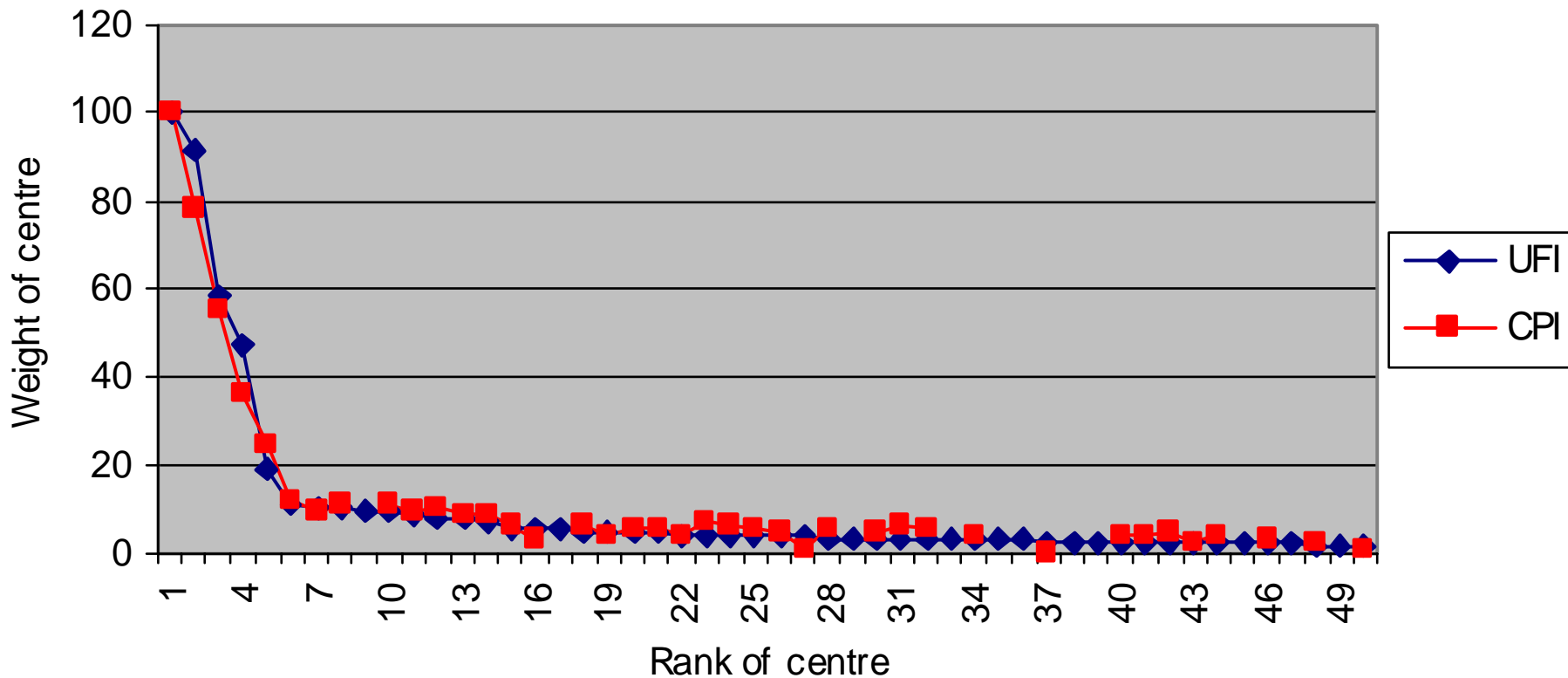
# Population size vs UFI of former White and Black cities in SA, 1996



Source: Own calculations, 1996

# The SA urban rank-size – 1996, 2003

## UFI and CPI positions of the 50 largest centres



# Overlap between districts and catchment areas

## - Best fit

Munisipal district	Km <sup>2</sup>		% Poligon Area overlap with Mun. District Area	% Mun District Area overlap with Polygon area
	Municipal District Area	Poligon Area		
Mossel Bay	2,008	1,946	88%	90%
Elundini	5,364	5,688	81%	77%
Mbizana	2,414	2,274	83%	89%
Ditsobotla	6,477	6,201	84%	87%
Setsoto	5,975	6,814	88%	77%
Zeerust	7,206	6,225	82%	95%
Richtersveld	9,684	9,298	91%	95%
Matzikama	5,544	6,710	85%	70%
City of Cape Town	2,500	2,377	83%	88%
Langeberg	5,733	6,255	92%	85%
Senqu	6,777	7,223	90%	84%
			<b>86%</b>	

# Overlap between districts and catchment areas

## – Medium fit

	Km <sup>2</sup>			
Munisipal district	Municipal District Area	Poligon Area	% Poligon Area overlap with Mun. District Area	% Mun District Area overlap with Polygon area
Kareeberg	17,720	18,830	59%	55%
Blue Crane Route	9,836	7,776	57%	72%
Mohokare	8,788	5,629	63%	98%
Highveld East	2,964	1,857	49%	78%
Inkwanca	3,587	2,987	65%	78%
			<b>59%</b>	

# Overlap between districts and catchment areas

## – Worst fit

	Km <sup>2</sup>			
Munisipal district	Municipal District Area	Poligon Area	% Poligon Area overlap with Mun. District Area	% Mun District Area overlap with Polygon area
Renosterberg	5536	2022	36%	99%
Central Karoo	5589	1634	29%	100%
Greater Taung	5649	2306	34%	84%
Thulamela	2,974	1,577	35%	66%
!Kheis	5,530	5,502	33%	33%
			<b>33%</b>	



# CPI & UFI of the first 50 centres

Former Name	New Municipal Name	UFI-2003	CPI-1996			
Johannesburg	City of Johannesburg	100.00	100.00	Rustenburg	Rustenburg Municipality	3.79
Cape Town	City of Cape Town	91.26	78.12	Polokwane	Polokwane Municipality	3.66
East Rand	East Rand Metropolitan	58.29	55.36	Vanderbijlpark	Emfuleni Municipality	3.52
Torona Sentraal	City of Tshwane	47.06	36.60	Krugersdorp	Mogale City Municipality	3.39
West Elizabeth	Nelson Mandela Metropolitan	19.11	24.37	Witbank	Emalahleni	3.34
East Rand		10.74	12.15	Welkom	Matjhabeng Municipality	3.27
Midrand		10.54	9.75	Paarl	Drakenstein Municipality	3.24
Emmarentia	Mangaung Municipality	10.38	10.66	Empangeni		3.08
East Rand	The Msunduzi Municipality	9.19		Potchefstroom	Potchefstroom Municipality	2.99
East Rand		9.18	11.33	Tzaneen	Greater Tzaneen Municipality	2.82
East Rand		8.43	9.16	Richards Bay	uMhlatuze Municipality	2.80
East London	Buffalo City	7.97	10.62	Newcastle	Newcastle Municipality	2.62
East Rand		7.57	8.73	Strand		2.57
East Rand		7.47	8.82	Wellington		2.46
East Rand		5.81	6.57	Brakpan		2.39
East Rand		5.68	3.19	Middelburg	Middelburg	2.38
East Rand	Midrand	5.45		Uitenhage		2.20
East Rand	Emfuleni Municipality	4.90	6.21	Knysna	Knysna Municipality	2.19
East Rand	Mbombela	4.86	4.01	Worcester	Breedevlei Municipality	2.15
East Rand	George Municipality	4.73	5.28	Port Shepstone	Hibiscus Coast Municipality	2.14
East Rand	City Council of Klerksdorp	4.41	5.28	Mossel Bay	Mossel Bay Municipality	2.08
East Rand	Stellenbosch Municipality	4.28	3.59	Loskop	Imbabazane Municipality	2.07
East Rand		4.18	6.84	Brits	Municipality of Madibeng	1.95
East Rand	Sol Plaatje Municipality	3.84	6.68	Greater Hermanus	Overstrand Municipality	1.78
East Rand		3.84	5.29	Ladysmith	Emnambithi/Ladysmith Municipality	1.72



# Factor analysis of social, economic and development indicators

Factor4

		Factor1	Factor2	Factor3
1. Semi-skilled labour	0.95802	-	-	-
2. Unskilled labour	0-94657	-	-	-
3. Public Phone	0.94395	-	-	-
4. Substandard accommodation	0-93107	-	-	-
5. No electricity	0.92731	-	-	-
6. High room crowdedness	0.92299	-	-	-
7. No refuse removal		0.91490	-	-
8. Lo household income	0.90527	-	-	-
9. Average accommodation	0.89287	-	-	-
10. Low personal income	0.88870	-	-	-
11. Black population	0.88564	-	-	-
12. Black potentially econ. active		0.87780	-	-
13. Rooms crowded	0.85773	-	-	-
14. Skilled labour	0.84427	0.41137	-	-
15. Communal water source		0.84087	-	-
16. No phone	0.83635	-	-	-
17. Rooms not crowded	0.83429	-	-	-
18. Highly Skilled labour	0.80793	0.40536	-	-
19. Black actual econ. active	0.79697	0.47751	-	-
20. Div of labour. - quaternary		0.79373	0.45226	-
21. Private water source	0.79248	0.52651	-	-
22. Rural settlement	0.78550	-	-	-
23. Private phone	0.78082	0.48354	-	-
24. Electrified		0-77484	0.50878	-
25. Medium personal income		0.70720	0.54200	-
26. High household income	0.67554	0.51731	-	-
27. Div. of labour - tertiary		0.66953	0.55259	-
28. High personal income	0.61886	0.59383	-	-
29. Medium household income	0.61703	0.59175	-	-
30. Div of labour - secondary		0.61423	0.56835	-
31. Housing quality - temporary		0.60165	0.46660	-
32. White population	-	0.87256	-	-
33. White potentially econ. active		-	0.87081	-
34. White actually econ. active		-	0.86222	-

<b>CM1 Potensial Dependency Index (PDI) - 1996</b>					
Economic Indicator					
<b>Municipality</b>	<b>Most Favourable Dependency Ratio (FDR)</b>				
	<b>Asian</b>	<b>Black</b>	<b>Coloured</b>	<b>White</b>	<b>Total</b>
CBDMA4: Kruger Park (Limpopo)	1.00	1.15	1.55	1.40	1.22
CBLC3 - Greater Marble Hall	1.60	2.52	2.40	1.68	2.49
CBLC4 - Greater Groblersdal	1.69	2.56	1.69	1.76	2.53
CBLC5 - Greater Tubatse	1.68	2.76	1.84	1.64	2.74
CBLC6 - Bushbuckridge	1.53	2.54	1.89	1.62	2.54
NP03A2 - Makhudutamaga	1.55	2.80	2.00	1.33	2.80
NP03A3 - Fetakgomo	inf.	2.75	2.06	1.65	2.75
NP04A1 - Drakensberg	1.43	2.67	1.46	1.68	2.59
NP331 - Greater Giyani	1.36	2.73	1.89	1.93	2.73
NP332 - Greater Letaba	1.47	2.69	2.26	1.77	2.68
NP333 - Greater Tzaneen	1.74	2.33	1.74	1.75	2.31
NP334 - Ba-Phalaborwa	1.48	2.00	1.46	1.70	1.96
NP341 - Musina	2.39	1.67	1.52	1.73	1.67
NP342 - Mutale	2.00	2.83	2.65	1.69	2.82
NP343 - NP343	1.46	2.65	1.71	1.53	2.65
NP344 - NP344	1.68	2.61	1.86	1.71	2.58
NP351 - Blouberg	1.11	3.05	2.07	1.81	3.04
NP352 - Aganang	1.57	2.94	1.63	1.69	2.94
NP353 - Molemole	1.43	2.49	1.70	1.60	2.47
NP354 - Polokwane	1.80	2.34	2.01	1.74	2.29
NP355 - Lepelle-Nkumpi	1.58	2.64	2.07	1.57	2.64
NP361 - Thabazimbi	1.25	1.46	1.44	1.76	1.51
NP362 - Lephalale	1.30	2.22	1.50	1.78	2.16
NP364 - NP364	1.00	1.84	1.42	1.89	1.86
NP365 - Modimolle	2.26	1.91	1.57	1.95	1.92
NP366 - Bela Bela	2.07	1.98	2.01	1.83	1.95
NP367 - Mogalakwena	1.60	2.61	1.92	1.62	2.58
<b>Average</b>	<b>1.52</b>	<b>2.40</b>	<b>1.83</b>	<b>1.70</b>	<b>2.39</b>

<b>CM2 Potential Dependency Index (PDI) - 2001</b>											
<b>Economic Indicator</b>											
				Legend: <table border="1"> <tr><td> </td><td>Best</td></tr> <tr><td> </td><td>Medium</td></tr> <tr><td> </td><td>Worst</td></tr> </table>			Best		Medium		Worst
	Best										
	Medium										
	Worst										
<b>Municipality</b>	<b>Most Favourable Dependency Ratio (FDR)</b>										
	<b>Asian</b>	<b>Black</b>	<b>Coloured</b>	<b>White</b>	<b>Total</b>						
CBLC3: Greater Marble Hall (Limpopo)	0.00	2.60	2.38	inf.	2.60						
CBLC4: Greater Groblersdal (Limpopo)	1.50	2.60	2.14	2.50	2.60						
CBLC5: Greater Tubatse (Limpopo)	1.63	2.64	1.93	1.75	2.64						
NP03A2: Makhuduthamaga	1.71	2.69	2.30	2.29	2.69						
NP03A3: Fetakgomo	0.00	2.63	inf.	1.70	2.62						
CBDMA4: Kruger Park (Limpopo)	0.00	1.17	0.00	1.25	1.18						
CBLC6: Bushbuckridge (Limpopo)	1.52	2.56	1.95	1.39	2.55						
NP04A1: Maruleng	1.50	2.37	1.78	1.58	2.33						
NP331: Greater Giyani	1.30	2.57	1.75	1.42	2.56						
NP332: Greater Letaba	1.35	2.47	2.00	1.66	2.46						
NP333: Greater Tzaneen	1.66	2.17	2.01	1.74	2.16						
NP334: Ba-Phalaborwa	1.24	1.95	1.75	1.61	1.91						
NP341: Musina	1.00	1.77	1.83	1.65	1.77						
NP342: Mutale	2.00	2.67	3.25	1.70	2.67						
NP343: Thulamela	1.54	2.51	1.81	1.48	2.50						
NP344: Makhado	1.68	2.47	1.88	1.67	2.44						
NP351: Blouberg	1.21	2.92	2.67	1.52	2.91						
NP352: Aganang	1.25	2.86	3.00	1.64	2.86						
NP353: Molemole	1.35	2.49	2.50	1.56	2.46						
NP354: Polokwane	1.68	2.17	1.92	1.67	2.12						
NP355: Lepelle-Nkumpi	1.50	2.62	2.28	1.52	2.61						
NP361: Thabazimbi	1.60	1.54	1.88	1.65	1.56						
NP362: Lephalale	1.20	2.04	2.16	1.69	2.01						
NP364: Mookgopong	1.00	1.80	1.60	1.93	1.82						
NP365: Modimolle	1.71	1.91	1.58	1.95	1.91						
NP366: Bela-Bela	1.79	1.97	2.01	1.85	1.95						
NP367: Mogalakwena	1.82	2.47	1.79	1.67	2.42						
<b>Average</b>	<b>1.32</b>	<b>2.32</b>	<b>1.93</b>	<b>1.63</b>	<b>2.31</b>						

CM3 Actual Dependency Index (ADI) - 1996				
Economic Indicator				

Legend:

	Best
	Medium
	Worst

Municipality	Actual Dependency Ratio (ADR)				
	Asian	Black	Coloured	White	Total
CBDMA4: Kruger Park (Limpopo)	10.26	1.73	6.27	2.17	1.92
CBLC3 - Greater Marble Hall	3.12	8.99	4.58	2.30	8.43
CBLC4 - Greater Groblers dal	2.05	11.58	3.34	2.49	10.65
CBLC5 - Greater Tubatse	2.72	16.63	5.19	2.39	15.90
CBLC6 - Bushbuckridge	3.36	11.43	7.24	2.48	11.40
NP03A2 - Makhudutamaga	2.30	21.23	7.24	1.98	21.05
NP03A3 - Fetakgomo	inf.	26.26	6.13	2.50	25.94
NP04A1 - Drakensberg	2.89	8.84	2.97	2.36	7.85
NP331 - Greater Giyani	2.53	10.96	7.98	3.31	10.87
NP332 - Greater Letaba	3.14	11.17	5.53	2.21	10.99
NP333 - Greater Tzaneen	2.60	6.49	3.80	2.23	6.16
NP334 - Ba-Phalaborwa	2.68	4.33	2.55	2.55	4.06
NP341 - Musina	5.50	2.56	2.20	2.56	2.56
NP342 - Mutale	2.62	14.18	19.21	2.35	13.95
NP343 - NP343	2.17	9.94	3.18	1.93	9.84
NP344 - NP344	2.70	8.53	3.98	2.23	7.97
NP351 - Blouberg	3.40	19.87	7.79	2.40	19.40
NP352 - Aganang	1.91	16.03	4.05	2.99	16.00
NP353 - Molemole	1.68	8.07	3.30	2.57	7.83
NP354 - Polokwane	2.64	6.70	3.27	2.33	5.98
NP355 - Lepelle-Nkumpi	3.49	11.32	6.54	2.00	11.27
NP361 - Thabazimbi	1.53	1.87	2.12	2.85	2.02
NP362 - Lephalale	2.86	4.49	2.22	2.63	4.16
NP364 - NP364	1.14	2.63	6.18	3.69	2.96
NP365 - Modimolle	3.41	2.68	1.94	3.26	2.79
NP366 - Bela Bela	3.10	3.62	4.93	3.53	3.61
NP367 - Mogalakwena	3.89	9.65	4.09	3.08	9.30
<b>Average</b>	<b>2.95</b>	<b>9.70</b>	<b>5.10</b>	<b>2.57</b>	<b>9.44</b>

<b>CM4 Actual Dependency Index (ADI) - 2001</b>					
Economic Indicator					
				Legend:	Best
					Medium
					Worst
Municipality	Actual Dependency Ratio (ADR)				
	Asian	Black	Coloured	White	Total
CBLC3: Greater Marble Hall (Limpopo)	0.00	13.81	0.00	0.00	13.80
CBLC4: Greater Groblersdal (Limpopo)	0.75	13.90	3.00	5.00	13.84
CBLC5: Greater Tubatse (Limpopo)	3.71	19.10	17.33	5.25	19.06
NP03A2: Makhuduthamaga	3.43	24.47	23.00	2.67	24.40
NP03A3: Fetakgomo	0.00	19.81	2.00	2.64	18.87
CBDMA4: Kruger Park (Limpopo)	0.00	1.32	0.00	1.60	1.35
CBLC6: Bushbuckridge (Limpopo)	1.78	13.61	6.46	2.32	13.53
NP04A1: Maruleng	1.80	6.88	3.20	1.92	6.36
NP331: Greater Giyani	1.50	11.58	3.18	1.74	11.43
NP332: Greater Letaba	2.45	8.23	4.67	2.33	8.01
NP333: Greater Tzaneen	3.23	5.98	3.68	2.16	5.75
NP334: Ba-Phalaborwa	2.38	4.69	3.37	2.14	4.27
NP341: Musina	1.50	2.46	2.75	1.99	2.43
NP342: Mutale	1.00	12.32	4.33	2.45	12.04
NP343: Thulamela	2.14	10.64	4.67	2.28	10.49
NP344: Makhado	2.54	8.87	4.95	2.18	8.28
NP351: Blouberg	1.28	15.87	13.33	2.20	15.45
NP352: Aganang	1.00	17.00	6.00	2.57	16.93
NP353: Molemole	1.58	6.96	2.50	2.38	6.73
NP354: Polokwane	2.54	6.11	3.32	2.16	5.42
NP355: Lepelle-Nkumpi	1.41	11.85	5.13	4.89	11.80
NP361: Thabazimbi	1.33	2.41	1.87	2.58	2.44
NP362: Lephalale	2.00	3.48	2.79	2.50	3.35
NP364: Mookgopong	2.00	2.65	2.29	3.44	2.75
NP365: Modimolle	2.93	3.18	2.15	3.39	3.20
NP366: Bela-Bela	2.44	3.74	3.06	3.10	3.63
NP367: Mogalakwena	2.69	8.99	3.28	2.41	8.05
<b>Average</b>	<b>1.83</b>	<b>9.63</b>	<b>4.90</b>	<b>2.60</b>	<b>9.39</b>

**DM1 Municipal Division of Labour Index (MDLI) - 1996**

Economic Index

 Legend: 
 Best  
 Medium  
 Worst

Municipalities	Primary sector	Secondary sector	Tertiary sector	Quaternary sector	Total
	Ratio (out of 100) within municipality				
CBDMA4: Kruger Park (Limpopo)	13.35	6.95	34.77	44.92	=100
CBLC3 - Greater Marble Hall	46.84	13.22	19.94	20.01	=100
CBLC4 - Greater Groblersdal	23.80	17.00	28.74	30.46	=100
CBLC5 - Greater Tubatse	36.31	15.05	26.29	22.36	=100
CBLC6 - Bushbuckridge	11.65	21.22	30.38	36.74	=100
NP03A2 - Makhudutamaga	10.68	15.28	25.46	48.58	=100
NP03A3 - Fetakgomo	34.62	11.38	14.04	39.97	=100
NP04A1 - Drakensberg	55.07	8.97	16.10	19.86	=100
NP331 - Greater Giyani	12.61	16.63	24.75	46.01	=100
NP332 - Greater Letaba	27.35	18.97	27.07	26.61	=100
NP333 - Greater Tzaneen	34.83	19.16	23.73	22.27	=100
NP334 - Ba-Phalaborwa	38.73	16.93	20.47	23.87	=100
NP341 - Musina	63.61	7.95	15.27	13.17	=100
NP342 - Mutale	19.48	18.65	18.78	43.09	=100
NP343: Thulamela	7.01	23.75	24.93	44.31	=100
NP344: Makhado	23.91	19.77	26.28	30.04	=100
NP351 - Blouberg	29.28	15.13	18.74	36.85	=100
NP352 - Aganang	6.74	24.02	28.78	40.46	=100
NP353 - Molemole	44.85	13.57	20.17	21.42	=100
NP354 - Polokwane	6.64	20.82	37.71	34.82	=100
NP355 - Lepelle-Nkumpi	10.81	17.29	24.35	47.55	=100
NP361 - Thabazimbi	75.23	10.11	8.89	5.78	=100
NP362 - Lephalale	58.58	14.40	12.37	14.64	=100
NP364: Mookgopong	59.76	10.23	16.52	13.49	=100
NP365 - Modimolle	49.72	16.42	17.60	16.25	=100
NP366 - Bela Bela	35.65	20.15	27.18	17.02	=100
NP367 - Mogalakwena	9.06	25.13	31.61	34.20	=100
<b>Average</b>	<b>31.34</b>	<b>16.23</b>	<b>23.00</b>	<b>29.44</b>	<b>=100</b>



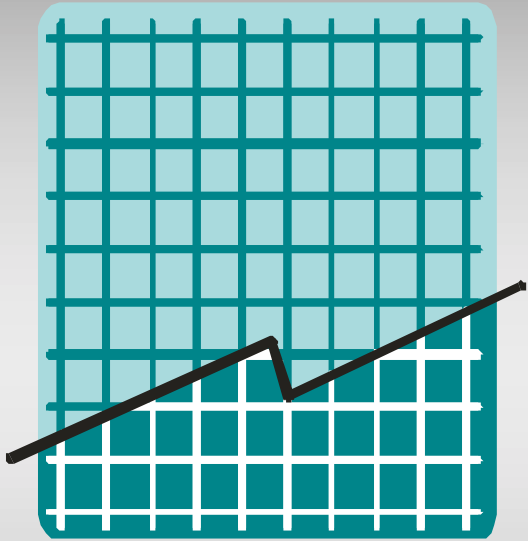
<b>DM2 Provincial Division of Labour Index (PDLI) - 2001</b>				
Economic Index				
<b>Municipalities</b>	<b>Primary</b>	<b>Secondary</b>	<b>Tertiary</b>	<b>Quaternary</b>
	<b>Municipal rank (out of 100) within province</b>			
CBLC3: Greater Marble Hall (Limpopo)	2.52	5.30	4.20	4.78
CBLC4: Greater Groblersdal (Limpopo)	1.34	4.71	7.01	6.57
CBLC5: Greater Tubatse (Limpopo)	12.75	9.25	8.84	11.84
NP03A2: Makhuduthamaga	2.15	7.47	7.65	16.15
NP03A3: Fetakgomo	9.13	3.45	1.94	4.53
CBDMA4: Kruger Park (Limpopo)	0.19	0.63	0.83	2.26
CBLC6: Bushbuckridge (Limpopo)	16.11	33.61	31.48	42.87
NP04A1: Maruleng	30.77	7.44	8.88	10.11
NP331: Greater Giyani	9.89	15.39	15.12	27.15
NP332: Greater Letaba	53.58	20.11	20.12	16.48
NP333: Greater Tzaneen	100.00	73.12	42.60	43.28
NP334: Ba-Phalaborwa	45.92	30.38	18.66	22.63
NP341: Musina	49.20	5.56	5.95	7.09
NP342: Mutale	6.27	5.30	4.01	7.16
NP343: Thulamela	12.98	65.02	43.25	71.80
NP344: Makhado	49.84	52.82	44.41	63.00
NP351: Blouberg	13.47	6.59	6.44	11.34
NP352: Aganang	2.96	8.53	6.84	11.54
NP353: Molemole	36.50	7.94	8.27	12.14
NP354: Polokwane	27.44	100.00	100.00	100.00
NP355: Lepele-Nkumpi	10.12	15.64	12.54	26.01
NP361: Thabazimbi	75.21	16.45	7.99	13.06
NP362: Lephalale	55.52	19.49	12.69	24.10
NP364: Mookgopong	21.74	8.17	6.66	7.58
NP365: Modimolle	35.33	21.59	12.70	19.68
NP366: Bela-Bela	16.29	10.02	11.93	12.77
NP367: Mogalakwena	26.38	35.70	31.12	36.73
<b>Average</b>	<b>26.80</b>	<b>21.84</b>	<b>17.86</b>	<b>23.43</b>

# Conclusion and way forward

- Debates are still about veracity of stats
- Statistics are still very fragmented
- As yet no coherence and agreement on measures

## Way forward

- Strengthen the statistics system
  - Agree on elements of M&E (data items)
  - Eliminate fragmentations
- Data needs indaba
  - We need to agree on indicators
- Adoption of the DIF as a working approach



# Statistics South Africa

---

Reliable • Relevant • Responsive • Representative

---